

Report No.: 18300RC10348001

Test Report


Client Name : VENUS AI TECHNOLOGY CO.,LTD
Address : 2F., NO.162, MAIJIN RD., YINGGE VIL., ANLE DIST.,
KEELUNG CITY 204, TAIWAN
Product Name : Soap dispenser
Date : July 22, 2021



Shenzhen Anbotek Compliance Laboratory Limited

Shenzhen Anbotek Compliance Laboratory Limited

Address: East of 4/F., Building A, Hourui No.3 Industrial Zone, Xixiang Street, Bao'an District,
Shenzhen, Guangdong, China
Tel: (86)755-26066126 Fax: (86)755-26066021 Email: service@anbotek.com

 Hotline
400-003-0500
www.anbotek.com

Test Report

Report No.: 18300RC10348001

Date: July 22, 2021

Page 1 of 33

Applicant : VENUS AI TECHNOLOGY CO.,LTD**Address** : 2F., NO.162, MAIJIN RD., YINGGE VIL., ANLE DIST., KEELUNG CITY 204, TAIWAN**The submitted sample and sample information was/were submitted and identified by/on the behalf of the client****Sample Name** : Soap dispenser**Model No.** : VE-48, VE-4RX, K9 PRO PLUS, K9 PRO DUAL,**Manufacturer** : VENUS AI TECHNOLOGY CO.,LTD**Sample Received Date** : Mar. 08, 2021**Testing Period** : Mar. 08, 2021 to Mar. 16, 2021

Test Requested : As specified by client, to test the Lead(Pb), Cadmium(Cd), Mercury(Hg), Hexavalent Chromium(Cr(VI)), Polybrominated Biphenyl(PBBs), Polybrominated Diphenyl Ethers (PBDEs), Diisobutyl phthalate (DIBP), Dibutyl phthalate(DBP), Benzyl butyl phthalate(BBP), Di-2-ethylhexyl phthalate(DEHP) in the selected material of the submitted sample in accordance with the RoHS Directive 2011/65/EU and amendment Commission Delegated Directive (EU) 2015/863 with effective from 22 July 2019.

Test Method: Please refer to the following page(s).**Test Result(s):** Please refer to the following page(s).

Edited by

Linna

Reviewed by

Jackie

Authorized Signatory

Wendy Wang

Test Report

Report No.: 18300RC10348001

Date: July 22, 2021

Page 2 of 33

Test Method:

A. XRF Screening Test

XRF screening limits in mg/kg for regulated elements according to IEC 62321-3-1:2013.

Element	Limit of IEC 62321-3-1:2013 Unit (mg/kg)		
	Polymers	Metals	Composite material
Cd	$BL \leq (70-3\sigma) < X < (130+3\sigma) \leq OL$	$BL \leq (70-3\sigma) < X < (130+3\sigma) \leq OL$	$LOD < X < (150+3\sigma) \leq OL$
Pb	$BL \leq (700-3\sigma) < X < (1300+3\sigma) \leq OL$	$BL \leq (700-3\sigma) < X < (1300+3\sigma) \leq OL$	$BL \leq (500-3\sigma) < X < (1500+3\sigma) \leq OL$
Hg	$BL \leq (700-3\sigma) < X < (1300+3\sigma) \leq OL$	$BL \leq (700-3\sigma) < X < (1300+3\sigma) \leq OL$	$BL \leq (500-3\sigma) < X < (1500+3\sigma) \leq OL$
Br	$BL \leq (300-3\sigma) < X$	N.A.	$BL \leq (250-3\sigma) < X$
Cr	$BL \leq (700-3\sigma) < X$	$BL \leq (700-3\sigma) < X$	$BL \leq (500-3\sigma) < X$

Note:

-N.A. = Not Applicable

-BL = Under the XRF screening limit

-OL = Further chemical test will be conducted while result is above the screening limit

-X= The symbol "X" marks the region where further investigation is necessary

-3σ= The reproducibility of analytical instruments

-LOD= Detection limit

B. Chemical Test

Test Item(s)	Test Method	Measured Equipment(s)	MDL	Limit
Lead (Pb)	IEC 62321-5:2013	ICP-OES	2 mg/kg	1000 mg/kg
Cadmium (Cd)	IEC 62321-5:2013		2 mg/kg	100 mg/kg
Mercury (Hg)	IEC 62321-4:2013+AMD1:2017		2 mg/kg	1000 mg/kg
Hexavalent Chromium Cr(VI)	IEC 62321-7-1:2015	UV-VIS	0.10μg/cm ²	---
	IEC 62321-7-2:2017		8 mg/kg	1000 mg/kg
Polybrominated Biphenyls (PBBs)	IEC 62321-6:2015	GC-MS	5 mg/kg	1000 mg/kg
Polybrominated Diphenyl Ethers (PBDEs)	IEC 62321-6:2015		5 mg/kg	1000 mg/kg
Phthalates (DIBP, DBP, BBP, DEHP)	IEC 62321-8:2017		50 mg/kg	1000 mg/kg



Test Report

Report No.: 18300RC10348001

Date: July 22, 2021

Page 3 of 33

Test Results:

Sample No.	Sample Description	Tested Items	XRF Screening Test	Chemical Test Unit (mg/kg)	Conclusion
1	White plastic shell	Pb	BL	/	PASS
		Cd	BL	/	
		Hg	BL	/	
		Cr(Cr(VI))	BL	/	
		Br(PBBs&PBDEs)	BL	/	
		DBP	N.A.	N.D.	
		BBP	N.A.	N.D.	
		DEHP	N.A.	N.D.	
		DIBP	N.A.	N.D.	
2	Black transparent plastic plate	Pb	BL	/	PASS
		Cd	BL	/	
		Hg	BL	/	
		Cr(Cr(VI))	BL	/	
		Br(PBBs&PBDEs)	BL	/	
		DBP	N.A.	N.D.	
		BBP	N.A.	N.D.	
		DEHP	N.A.	N.D.	
		DIBP	N.A.	N.D.	
3	Black plastic plate	Pb	BL	/	PASS
		Cd	BL	/	
		Hg	BL	/	
		Cr(Cr(VI))	BL	/	
		Br(PBBs&PBDEs)	BL	/	
		DBP	N.A.	N.D.	
		BBP	N.A.	N.D.	
		DEHP	N.A.	N.D.	
		DIBP	N.A.	N.D.	

Test Report

Report No.: 18300RC10348001

Date: July 22, 2021

Page 4 of 33

Sample No.	Sample Description	Tested Items	XRF Screening Test Unit (mg/kg)	Chemical Test Unit (mg/kg)	Conclusion
4	Silvery metal pillar	Pb	OL	26970*	PASS
		Cd	BL	/	
		Hg	BL	/	
		Cr(Cr(VI))	BL	/	
		Br(PBBs&PBDEs)	N.A.	/	
		DBP	N.A.	/	
		BBP	N.A.	/	
		DEHP	N.A.	/	
		DIBP	N.A.	/	
5	Copper-colored metal stud	Pb	OL	26760*	PASS
		Cd	BL	/	
		Hg	BL	/	
		Cr(Cr(VI))	BL	/	
		Br(PBBs&PBDEs)	N.A.	/	
		DBP	N.A.	/	
		BBP	N.A.	/	
		DEHP	N.A.	/	
		DIBP	N.A.	/	
6	Red plastic jacket	Pb	BL	/	PASS
		Cd	BL	/	
		Hg	BL	/	
		Cr(Cr(VI))	BL	/	
		Br(PBBs&PBDEs)	BL	/	
		DBP	N.A.	N.D.	
		BBP	N.A.	N.D.	
		DEHP	N.A.	N.D.	
		DIBP	N.A.	N.D.	

Test Report

Report No.: 18300RC10348001

Date: July 22, 2021

Page 5 of 33

Sample No.	Sample Description	Tested Items	XRF Screening Test Unit (mg/kg)	Chemical Test Unit (mg/kg)	Conclusion
7	Black plastic jacket	Pb	BL	/	PASS
		Cd	BL	/	
		Hg	BL	/	
		Cr(Cr(VI))	BL	/	
		Br(PBBs&PBDEs)	BL	/	
		DBP	N.A.	N.D.	
		BBP	N.A.	N.D.	
		DEHP	N.A.	N.D.	
		DIBP	N.A.	N.D.	
8	Silvery metal spring	Pb	BL	/	PASS
		Cd	BL	/	
		Hg	BL	/	
		Cr(Cr(VI))	BL	/	
		Br(PBBs&PBDEs)	N.A.	/	
		DBP	N.A.	/	
		BBP	N.A.	/	
		DEHP	N.A.	/	
		DIBP	N.A.	/	
9	Black plastic frame	Pb	BL	/	PASS
		Cd	BL	/	
		Hg	BL	/	
		Cr(Cr(VI))	BL	/	
		Br(PBBs&PBDEs)	BL	/	
		DBP	N.A.	N.D.	
		BBP	N.A.	N.D.	
		DEHP	N.A.	N.D.	
		DIBP	N.A.	N.D.	

Test Report

Report No.: 18300RC10348001

Date: July 22, 2021

Page 6 of 33

Sample No.	Sample Description	Tested Items	XRF Screening Test Unit (mg/kg)	Chemical Test Unit (mg/kg)	Conclusion
10	Transparent silicone	Pb	BL	/	PASS
		Cd	BL	/	
		Hg	BL	/	
		Cr(Cr(VI))	BL	/	
		Br(PBBs&PBDEs)	BL	/	
		DBP	N.A.	N.D.	
		BBP	N.A.	N.D.	
		DEHP	N.A.	N.D.	
		DIBP	N.A.	N.D.	
11	Translucent plastic bucket	Pb	BL	/	PASS
		Cd	BL	/	
		Hg	BL	/	
		Cr(Cr(VI))	BL	/	
		Br(PBBs&PBDEs)	BL	/	
		DBP	N.A.	N.D.	
		BBP	N.A.	N.D.	
		DEHP	N.A.	N.D.	
		DIBP	N.A.	N.D.	
12	Black foam plate	Pb	BL	/	PASS
		Cd	BL	/	
		Hg	BL	/	
		Cr(Cr(VI))	BL	/	
		Br(PBBs&PBDEs)	BL	/	
		DBP	N.A.	283	
		BBP	N.A.	N.D.	
		DEHP	N.A.	N.D.	
		DIBP	N.A.	N.D.	

Test Report

Report No.: 18300RC10348001

Date: July 22, 2021

Page 7 of 33

Sample No.	Sample Description	Tested Items	XRF Screening Test Unit (mg/kg)	Chemical Test Unit (mg/kg)	Conclusion
13	Silvery metal shell	Pb	BL	/	PASS
		Cd	BL	/	
		Hg	BL	/	
		Cr(Cr(VI))	BL	/	
		Br(PBBs&PBDEs)	N.A.	/	
		DBP	N.A.	/	
		BBP	N.A.	/	
		DEHP	N.A.	/	
		DIBP	N.A.	/	
14▼	Soldering tin	Pb	BL	/	PASS
		Cd	BL	/	
		Hg	BL	/	
		Cr(Cr(VI))	BL	/	
		Br(PBBs&PBDEs)	N.A.	/	
		DBP	N.A.	/	
		BBP	N.A.	/	
		DEHP	N.A.	/	
		DIBP	N.A.	/	
15	Black foam patch	Pb	BL	/	PASS
		Cd	BL	/	
		Hg	BL	/	
		Cr(Cr(VI))	BL	/	
		Br(PBBs&PBDEs)	BL	/	
		DBP	N.A.	N.D.	
		BBP	N.A.	N.D.	
		DEHP	N.A.	N.D.	
		DIBP	N.A.	N.D.	

Test Report

Report No.: 18300RC10348001

Date: July 22, 2021

Page 8 of 33

Sample No.	Sample Description	Tested Items	XRF Screening Test Unit (mg/kg)	Chemical Test Unit (mg/kg)	Conclusion
16	Green PCB board	Pb	BL	/	PASS
		Cd	BL	/	
		Hg	BL	/	
		Cr(Cr(VI))	BL	/	
		Br(PBBs&PBDEs)	X	N.D.	
		DBP	N.A.	N.D.	
		BBP	N.A.	N.D.	
		DEHP	N.A.	N.D.	
		DIBP	N.A.	N.D.	
17▼	Soldering tin	Pb	BL	/	PASS
		Cd	BL	/	
		Hg	BL	/	
		Cr(Cr(VI))	BL	/	
		Br(PBBs&PBDEs)	N.A.	/	
		DBP	N.A.	/	
		BBP	N.A.	/	
		DEHP	N.A.	/	
		DIBP	N.A.	/	
18	Translucent plastic shell	Pb	BL	/	PASS
		Cd	BL	/	
		Hg	BL	/	
		Cr(Cr(VI))	BL	/	
		Br(PBBs&PBDEs)	BL	/	
		DBP	N.A.	N.D.	
		BBP	N.A.	N.D.	
		DEHP	N.A.	N.D.	
		DIBP	N.A.	N.D.	



Test Report

Report No.: 18300RC10348001

Date: July 22, 2021

Page 9 of 33

Sample No.	Sample Description	Tested Items	XRF Screening Test Unit (mg/kg)	Chemical Test Unit (mg/kg)	Conclusion
19	Black rubber plate	Pb	BL	/	PASS
		Cd	BL	/	
		Hg	BL	/	
		Cr(Cr(VI))	BL	/	
		Br(PBBs&PBDEs)	BL	/	
		DBP	N.A.	N.D.	
		BBP	N.A.	N.D.	
		DEHP	N.A.	N.D.	
		DIBP	N.A.	N.D.	
20	Translucent rubber tube	Pb	BL	/	PASS
		Cd	BL	/	
		Hg	BL	/	
		Cr(Cr(VI))	BL	/	
		Br(PBBs&PBDEs)	BL	/	
		DBP	N.A.	N.D.	
		BBP	N.A.	N.D.	
		DEHP	N.A.	N.D.	
		DIBP	N.A.	N.D.	
21	Black LED	Pb	BL	/	PASS
		Cd	BL	/	
		Hg	BL	/	
		Cr(Cr(VI))	BL	/	
		Br(PBBs&PBDEs)	X	N.D.	
		DBP	N.A.	N.D.	
		BBP	N.A.	N.D.	
		DEHP	N.A.	N.D.	
		DIBP	N.A.	N.D.	

Test Report

Report No.: 18300RC10348001

Date: July 22, 2021

Page 10 of 33

Sample No.	Sample Description	Tested Items	XRF Screening Test Unit (mg/kg)	Chemical Test Unit (mg/kg)	Conclusion
22	Transparent LED	Pb	BL	/	PASS
		Cd	BL	/	
		Hg	BL	/	
		Cr(Cr(VI))	BL	/	
		Br(PBBs&PBDEs)	X	N.D.	
		DBP	N.A.	N.D.	
		BBP	N.A.	N.D.	
		DEHP	N.A.	N.D.	
		DIBP	N.A.	N.D.	
23	Black plastic spacer	Pb	BL	/	PASS
		Cd	BL	/	
		Hg	BL	/	
		Cr(Cr(VI))	BL	/	
		Br(PBBs&PBDEs)	BL	/	
		DBP	N.A.	N.D.	
		BBP	N.A.	N.D.	
		DEHP	N.A.	N.D.	
		DIBP	N.A.	N.D.	
24	Soldering tin	Pb	BL	/	PASS
		Cd	BL	/	
		Hg	BL	/	
		Cr(Cr(VI))	BL	/	
		Br(PBBs&PBDEs)	N.A.	/	
		DBP	N.A.	/	
		BBP	N.A.	/	
		DEHP	N.A.	/	
		DIBP	N.A.	/	

Test Report

Report No.: 18300RC10348001

Date: July 22, 2021

Page 11 of 33

Sample No.	Sample Description	Tested Items	XRF Screening Test Unit (mg/kg)	Chemical Test Unit (mg/kg)	Conclusion
25	Black plastic shell	Pb	BL	/	PASS
		Cd	BL	/	
		Hg	BL	/	
		Cr(Cr(VI))	BL	/	
		Br(PBBs&PBDEs)	BL	/	
		DBP	N.A.	N.D.	
		BBP	N.A.	N.D.	
		DEHP	N.A.	N.D.	
		DIBP	N.A.	N.D.	
26	Silvery metal shrapnel	Pb	BL	/	PASS
		Cd	BL	/	
		Hg	BL	/	
		Cr(Cr(VI))	X	Negative	
		Br(PBBs&PBDEs)	N.A.	/	
		DBP	N.A.	/	
		BBP	N.A.	/	
		DEHP	N.A.	/	
		DIBP	N.A.	/	
27	Black plastic button	Pb	BL	/	PASS
		Cd	BL	/	
		Hg	BL	/	
		Cr(Cr(VI))	BL	/	
		Br(PBBs&PBDEs)	BL	/	
		DBP	N.A.	N.D.	
		BBP	N.A.	N.D.	
		DEHP	N.A.	N.D.	
		DIBP	N.A.	N.D.	

Test Report

Report No.: 18300RC10348001

Date: July 22, 2021

Page 12 of 33

Sample No.	Sample Description	Tested Items	XRF Screening Test Unit (mg/kg)	Chemical Test Unit (mg/kg)	Conclusion
28	Silvery metal shell	Pb	BL	/	PASS
		Cd	BL	/	
		Hg	BL	/	
		Cr(Cr(VI))	BL	/	
		Br(PBBs&PBDEs)	N.A.	/	
		DBP	N.A.	/	
		BBP	N.A.	/	
		DEHP	N.A.	/	
		DIBP	N.A.	/	
29	Black inner plastic	Pb	BL	/	PASS
		Cd	BL	/	
		Hg	BL	/	
		Cr(Cr(VI))	BL	/	
		Br(PBBs&PBDEs)	BL	/	
		DBP	N.A.	N.D.	
		BBP	N.A.	N.D.	
		DEHP	N.A.	N.D.	
		DIBP	N.A.	N.D.	
30	Copper-colored metal pin	Pb	BL	/	PASS
		Cd	BL	/	
		Hg	BL	/	
		Cr(Cr(VI))	BL	/	
		Br(PBBs&PBDEs)	N.A.	/	
		DBP	N.A.	/	
		BBP	N.A.	/	
		DEHP	N.A.	/	
		DIBP	N.A.	/	

Test Report

Report No.: 18300RC10348001

Date: July 22, 2021

Page 13 of 33

Sample No.	Sample Description	Tested Items	XRF Screening Test Unit (mg/kg)	Chemical Test Unit (mg/kg)	Conclusion
31	Silvery metal shell	Pb	BL	/	PASS
		Cd	BL	/	
		Hg	BL	/	
		Cr(Cr(VI))	BL	/	
		Br(PBBs&PBDEs)	N.A.	/	
		DBP	N.A.	/	
		BBP	N.A.	/	
		DEHP	N.A.	/	
		DIBP	N.A.	/	
32	Chip resistor	Pb	BL	/	PASS
		Cd	BL	/	
		Hg	BL	/	
		Cr(Cr(VI))	BL	/	
		Br(PBBs&PBDEs)	BL	/	
		DBP	N.A.	N.D.	
		BBP	N.A.	N.D.	
		DEHP	N.A.	N.D.	
		DIBP	N.A.	N.D.	
33	IC	Pb	BL	/	PASS
		Cd	BL	/	
		Hg	BL	/	
		Cr(Cr(VI))	BL	/	
		Br(PBBs&PBDEs)	BL	/	
		DBP	N.A.	N.D.	
		BBP	N.A.	N.D.	
		DEHP	N.A.	N.D.	
		DIBP	N.A.	N.D.	

Test Report

Report No.: 18300RC10348001

Date: July 22, 2021

Page 14 of 33

Sample No.	Sample Description	Tested Items	XRF Screening Test Unit (mg/kg)	Chemical Test Unit (mg/kg)	Conclusion
34	Silvery metal shell	Pb	BL	/	PASS
		Cd	BL	/	
		Hg	BL	/	
		Cr(Cr(VI))	BL	/	
		Br(PBBs&PBDEs)	N.A.	/	
		DBP	N.A.	/	
		BBP	N.A.	/	
		DEHP	N.A.	/	
		DIBP	N.A.	/	
35	Chip capacitor	Pb	BL	/	PASS
		Cd	BL	/	
		Hg	BL	/	
		Cr(Cr(VI))	BL	/	
		Br(PBBs&PBDEs)	BL	/	
		DBP	N.A.	N.D.	
		BBP	N.A.	N.D.	
		DEHP	N.A.	N.D.	
		DIBP	N.A.	N.D.	
36	IC	Pb	BL	/	PASS
		Cd	BL	/	
		Hg	BL	/	
		Cr(Cr(VI))	BL	/	
		Br(PBBs&PBDEs)	BL	/	
		DBP	N.A.	N.D.	
		BBP	N.A.	N.D.	
		DEHP	N.A.	N.D.	
		DIBP	N.A.	N.D.	



Test Report

Report No.: 18300RC10348001

Date: July 22, 2021

Page 15 of 33

Sample No.	Sample Description	Tested Items	XRF Screening Test Unit (mg/kg)	Chemical Test Unit (mg/kg)	Conclusion
37	Inductor	Pb	BL	/	PASS
		Cd	BL	/	
		Hg	BL	/	
		Cr(Cr(VI))	BL	/	
		Br(PBBs&PBDEs)	BL	/	
		DBP	N.A.	N.D.	
		BBP	N.A.	N.D.	
		DEHP	N.A.	N.D.	
		DIBP	N.A.	N.D.	
38	Beige plastic port	Pb	BL	/	PASS
		Cd	BL	/	
		Hg	BL	/	
		Cr(Cr(VI))	BL	/	
		Br(PBBs&PBDEs)	BL	/	
		DBP	N.A.	N.D.	
		BBP	N.A.	N.D.	
		DEHP	N.A.	N.D.	
		DIBP	N.A.	N.D.	
39	Chip audion	Pb	BL	/	PASS
		Cd	BL	/	
		Hg	BL	/	
		Cr(Cr(VI))	BL	/	
		Br(PBBs&PBDEs)	BL	/	
		DBP	N.A.	N.D.	
		BBP	N.A.	N.D.	
		DEHP	N.A.	N.D.	
		DIBP	N.A.	N.D.	

Test Report

Report No.: 18300RC10348001

Date: July 22, 2021

Page 16 of 33

Sample No.	Sample Description	Tested Items	XRF Screening Test Unit (mg/kg)	Chemical Test Unit (mg/kg)	Conclusion
40	Yellow LED	Pb	BL	/	PASS
		Cd	BL	/	
		Hg	BL	/	
		Cr(Cr(VI))	BL	/	
		Br(PBBs&PBDEs)	BL	/	
		DBP	N.A.	N.D.	
		BBP	N.A.	N.D.	
		DEHP	N.A.	N.D.	
		DIBP	N.A.	N.D.	
41	LED	Pb	BL	/	PASS
		Cd	BL	/	
		Hg	BL	/	
		Cr(Cr(VI))	BL	/	
		Br(PBBs&PBDEs)	BL	/	
		DBP	N.A.	N.D.	
		BBP	N.A.	N.D.	
		DEHP	N.A.	N.D.	
		DIBP	N.A.	N.D.	
42	Green PCB board	Pb	BL	/	PASS
		Cd	BL	/	
		Hg	BL	/	
		Cr(Cr(VI))	BL	/	
		Br(PBBs&PBDEs)	X	N.D.	
		DBP	N.A.	N.D.	
		BBP	N.A.	N.D.	
		DEHP	N.A.	N.D.	
		DIBP	N.A.	N.D.	

Test Report

Report No.: 18300RC10348001

Date: July 22, 2021

Page 17 of 33

Sample No.	Sample Description	Tested Items	XRF Screening Test Unit (mg/kg)	Chemical Test Unit (mg/kg)	Conclusion
43	White plastic scarfskin	Pb	BL	/	PASS
		Cd	BL	/	
		Hg	BL	/	
		Cr(Cr(VI))	BL	/	
		Br(PBBs&PBDEs)	BL	/	
		DBP	N.A.	N.D.	
		BBP	N.A.	N.D.	
		DEHP	N.A.	N.D.	
		DIBP	N.A.	N.D.	
44	White inner plastic	Pb	BL	/	PASS
		Cd	BL	/	
		Hg	BL	/	
		Cr(Cr(VI))	BL	/	
		Br(PBBs&PBDEs)	BL	/	
		DBP	N.A.	N.D.	
		BBP	N.A.	N.D.	
		DEHP	N.A.	N.D.	
		DIBP	N.A.	N.D.	
45	Copper-colored metal pin	Pb	BL	/	PASS
		Cd	BL	/	
		Hg	BL	/	
		Cr(Cr(VI))	BL	/	
		Br(PBBs&PBDEs)	N.A.	/	
		DBP	N.A.	/	
		BBP	N.A.	/	
		DEHP	N.A.	/	
		DIBP	N.A.	/	

Test Report

Report No.: 18300RC10348001

Date: July 22, 2021

Page 18 of 33

Sample No.	Sample Description	Tested Items	XRF Screening Test Unit (mg/kg)	Chemical Test Unit (mg/kg)	Conclusion
46	Silvery metal shell	Pb	BL	/	PASS
		Cd	BL	/	
		Hg	BL	/	
		Cr(Cr(VI))	BL	/	
		Br(PBBs&PBDEs)	N.A.	/	
		DBP	N.A.	/	
		BBP	N.A.	/	
		DEHP	N.A.	/	
		DIBP	N.A.	/	
47	White plastic scarfskin	Pb	BL	/	PASS
		Cd	BL	/	
		Hg	BL	/	
		Cr(Cr(VI))	BL	/	
		Br(PBBs&PBDEs)	BL	/	
		DBP	N.A.	N.D.	
		BBP	N.A.	N.D.	
		DEHP	N.A.	N.D.	
		DIBP	N.A.	N.D.	
48	Soldering tin	Pb	BL	/	PASS
		Cd	BL	/	
		Hg	BL	/	
		Cr(Cr(VI))	BL	/	
		Br(PBBs&PBDEs)	N.A.	/	
		DBP	N.A.	/	
		BBP	N.A.	/	
		DEHP	N.A.	/	
		DIBP	N.A.	/	

Test Report

Report No.: 18300RC10348001

Date: July 22, 2021

Page 19 of 33

Sample No.	Sample Description	Tested Items	XRF Screening Test Unit (mg/kg)	Chemical Test Unit (mg/kg)	Conclusion
49	Copper-colored metal pin	Pb	BL	/	PASS
		Cd	BL	/	
		Hg	BL	/	
		Cr(Cr(VI))	BL	/	
		Br(PBBs&PBDEs)	N.A.	/	
		DBP	N.A.	/	
		BBP	N.A.	/	
		DEHP	N.A.	/	
		DIBP	N.A.	/	
50	Black inner plastic	Pb	BL	/	PASS
		Cd	BL	/	
		Hg	BL	/	
		Cr(Cr(VI))	BL	/	
		Br(PBBs&PBDEs)	BL	/	
		DBP	N.A.	N.D.	
		BBP	N.A.	N.D.	
		DEHP	N.A.	N.D.	
		DIBP	N.A.	N.D.	
51	Silvery metal shell	Pb	BL	/	PASS
		Cd	BL	/	
		Hg	BL	/	
		Cr(Cr(VI))	X	Negative	
		Br(PBBs&PBDEs)	N.A.	/	
		DBP	N.A.	/	
		BBP	N.A.	/	
		DEHP	N.A.	/	
		DIBP	N.A.	/	

Test Report

Report No.: 18300RC10348001

Date: July 22, 2021

Page 20 of 33

Sample No.	Sample Description	Tested Items	XRF Screening Test Unit (mg/kg)	Chemical Test Unit (mg/kg)	Conclusion
52	Green plastic jacket	Pb	BL	/	PASS
		Cd	BL	/	
		Hg	BL	/	
		Cr(Cr(VI))	BL	/	
		Br(PBBs&PBDEs)	BL	/	
		DBP	N.A.	261	
		BBP	N.A.	N.D.	
		DEHP	N.A.	N.D.	
		DIBP	N.A.	N.D.	
53	Black plastic jacket	Pb	BL	/	PASS
		Cd	BL	/	
		Hg	BL	/	
		Cr(Cr(VI))	BL	/	
		Br(PBBs&PBDEs)	BL	/	
		DBP	N.A.	808	
		BBP	N.A.	N.D.	
		DEHP	N.A.	142	
		DIBP	N.A.	N.D.	
54	Red plastic jacket	Pb	BL	/	PASS
		Cd	BL	/	
		Hg	BL	/	
		Cr(Cr(VI))	BL	/	
		Br(PBBs&PBDEs)	BL	/	
		DBP	N.A.	693	
		BBP	N.A.	N.D.	
		DEHP	N.A.	132	
		DIBP	N.A.	N.D.	

Test Report

Report No.: 18300RC10348001

Date: July 22, 2021

Page 21 of 33

Sample No.	Sample Description	Tested Items	XRF Screening Test Unit (mg/kg)	Chemical Test Unit (mg/kg)	Conclusion
55	White plastic jacket	Pb	BL	/	PASS
		Cd	BL	/	
		Hg	BL	/	
		Cr(Cr(VI))	BL	/	
		Br(PBBs&PBDEs)	BL	/	
		DBP	N.A.	401	
		BBP	N.A.	N.D.	
		DEHP	N.A.	N.D.	
		DIBP	N.A.	N.D.	

Note:

- The screening results are only used for reference.
- When conducting the test for PBBs&PBDEs, XRF was introduced to screen Br Exclusively; When conducting the test for Hexavalent Chromium, XRF was introduced to screen Chromium exclusively.

-BL = Under the XRF screening limit

-OL = Further chemical test will be conducted while result is above the screening limit

-X= The symbol "X" marks the region where further investigation is necessary

-LOD= Detection limit

-MDL = Method Detection Limit

-N.A. = Not Applicable

-N.D. = Not Detected (<MDL)

-/=Not tested

-mg/kg = ppm = parts per million

- $\mu\text{g}/\text{cm}^2$ = microgramme per square centimeter

- "—" =

a. -Negative = Absence of Cr(VI) , the detected Cr(VI) concentration in the boiling water extraction solution is less than $0.10\mu\text{g}/\text{cm}^2$.

b. -Positive = Presence of Cr(VI), the detected Cr(VI) concentration in the boiling water extraction solution is equal to or greater than $0.13\mu\text{g}/\text{cm}^2$.

c. The result between is $0.10\mu\text{g}/\text{cm}^2$ and $0.13\mu\text{g}/\text{cm}^2$ is considered to be inconclusive-unavoidable coating variations may influence the determination.

-* = According to the product specification provided from client, the submitted sample of specimen No.4/5 are copper alloy containing up to 4% Lead by weight which is exempted by RoHS regulatory (Directive 2011/65/EU of The European Parliament and of The Council of 8 June 2011).



Test Report

Report No.: 18300RC10348001

Date: July 22, 2021

Page 22 of 33

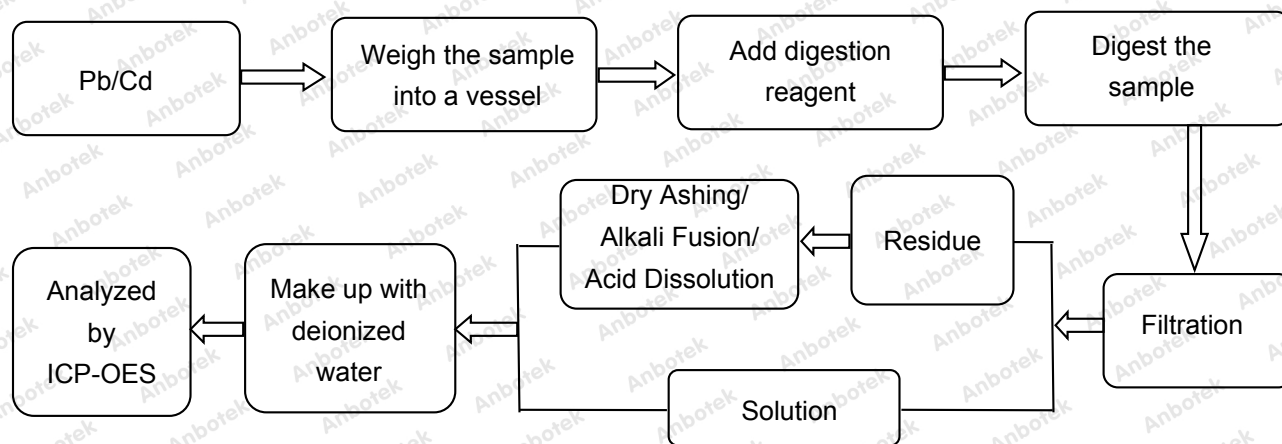
- ▽=The resubmitted date of test sample 14/ sample 17 are Mar. 16, 2021.

- As specified by the client, all the results in this report were quoted from report 18300RC10080701, Test

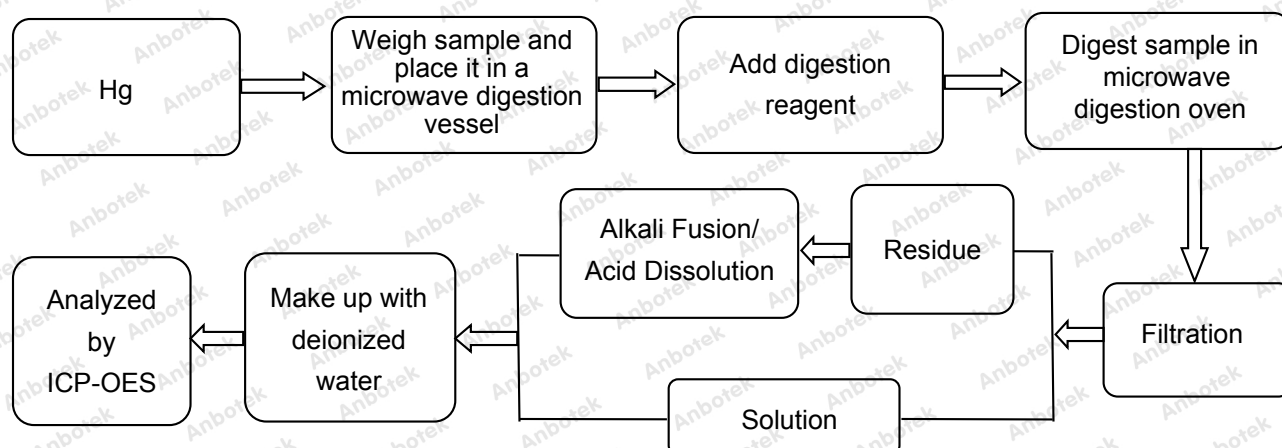
Sample Name: Soap dispenser, Test Model No: K9 PRO PLUS

Test Process:

◆ IEC 62321-5:2013



◆ IEC 62321-4:2013+AMD1:2017



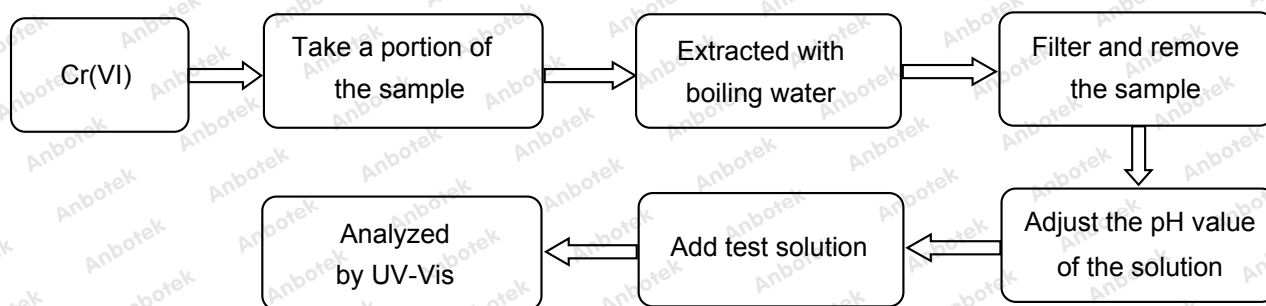
Test Report

Report No.: 18300RC10348001

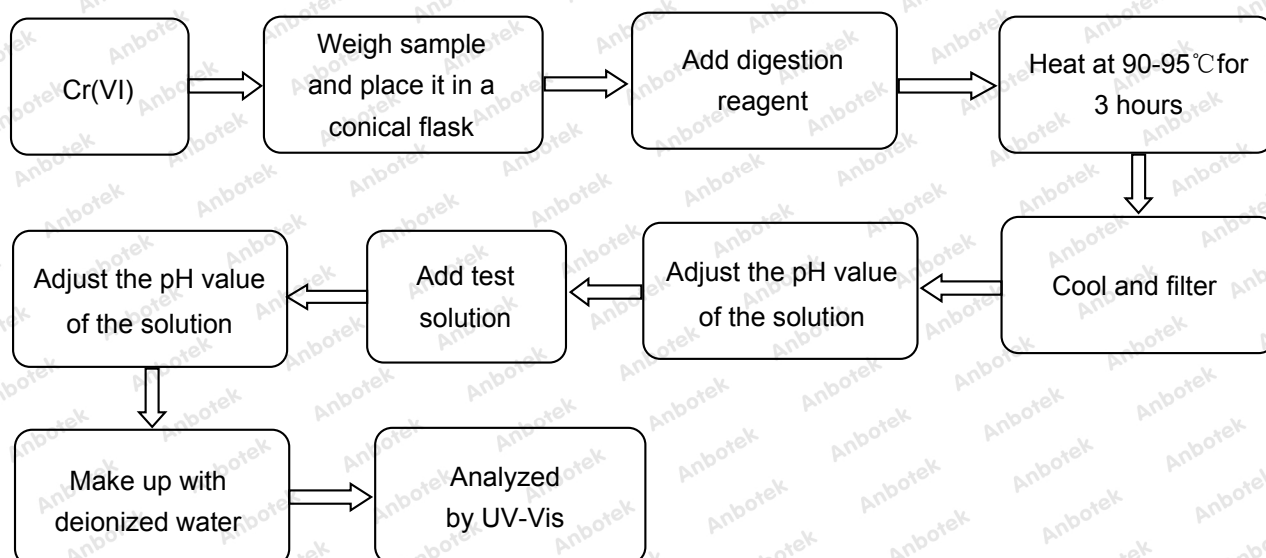
Date: July 22, 2021

Page 23 of 33

◆ IEC 62321-7-1:2015



◆ IEC 62321-7-2:2017

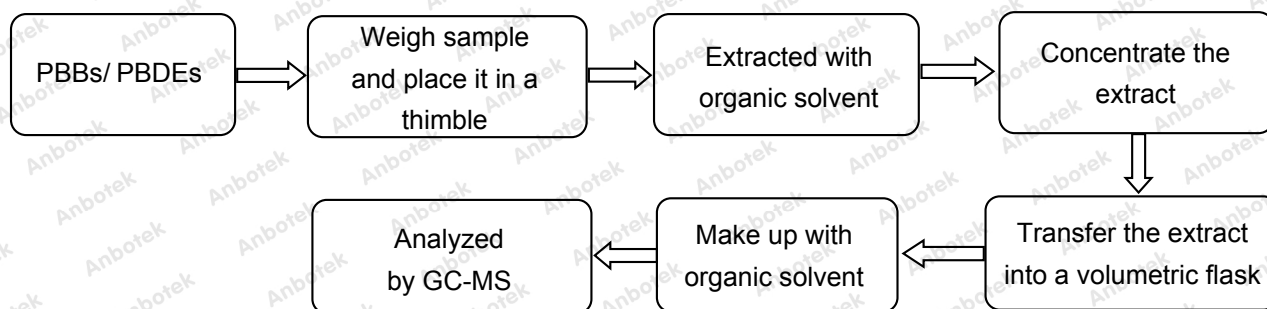
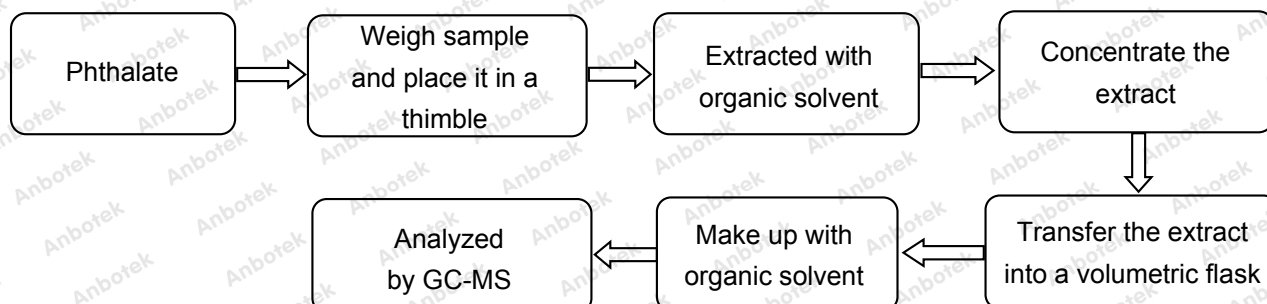


Test Report

Report No.: 18300RC10348001

Date: July 22, 2021

Page 24 of 33

◆ IEC 62321-6:2015**◆ IEC 62321-8:2017**

Test Report

Report No.: 18300RC10348001

Date: July 22, 2021

Page 25 of 33

Photograph of Sample



Photo(s) of the component(s)

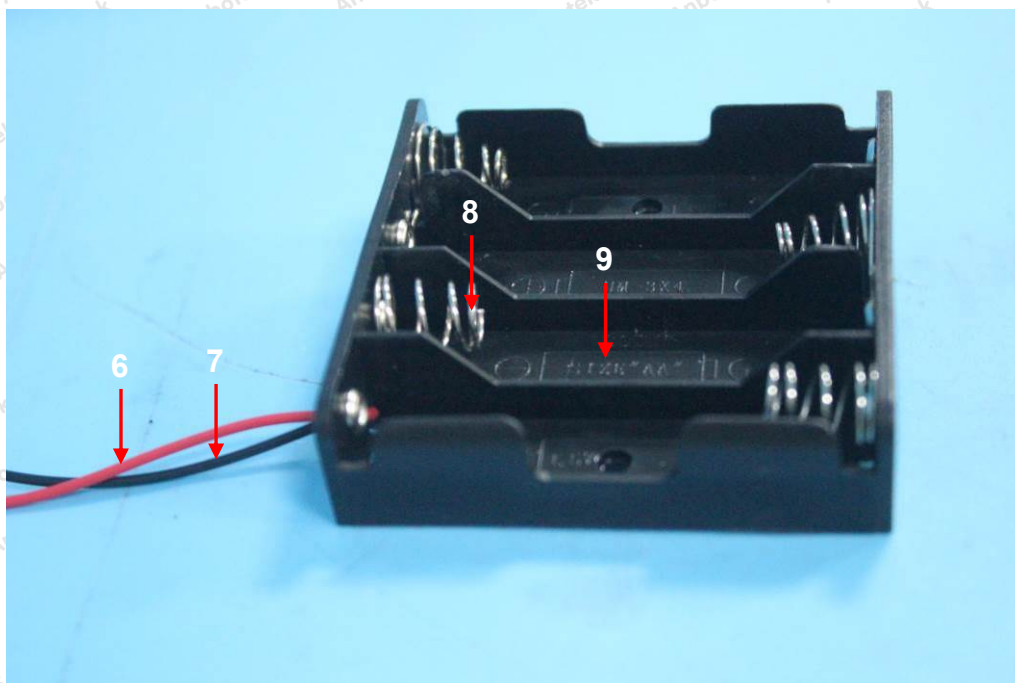


Test Report

Report No.: 18300RC10348001

Date: July 22, 2021

Page 26 of 33

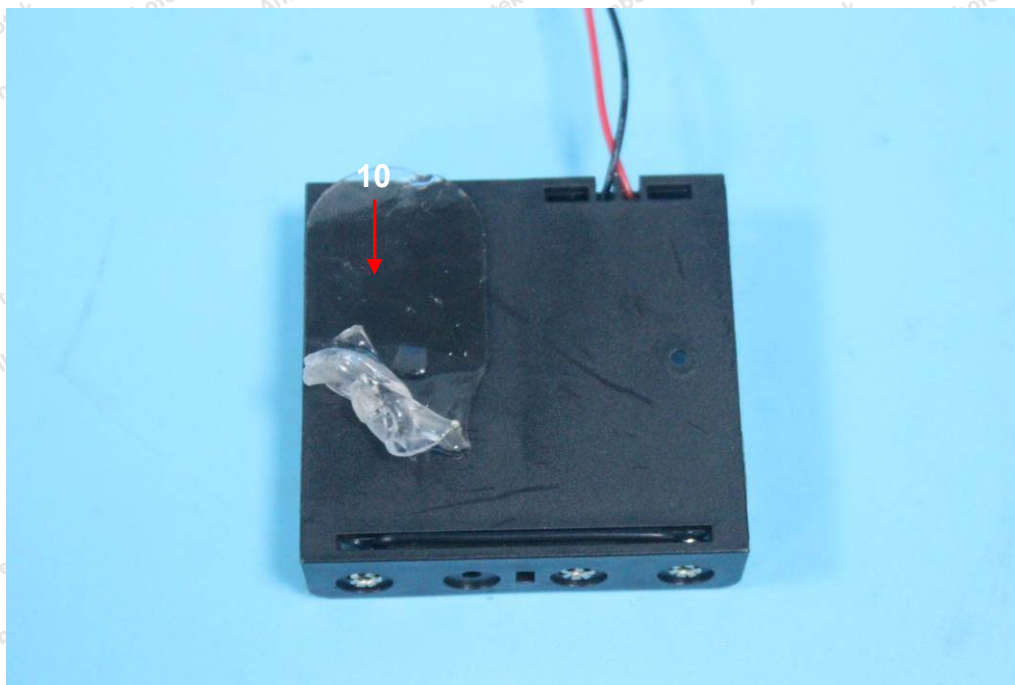


Test Report

Report No.: 18300RC10348001

Date: July 22, 2021

Page 27 of 33

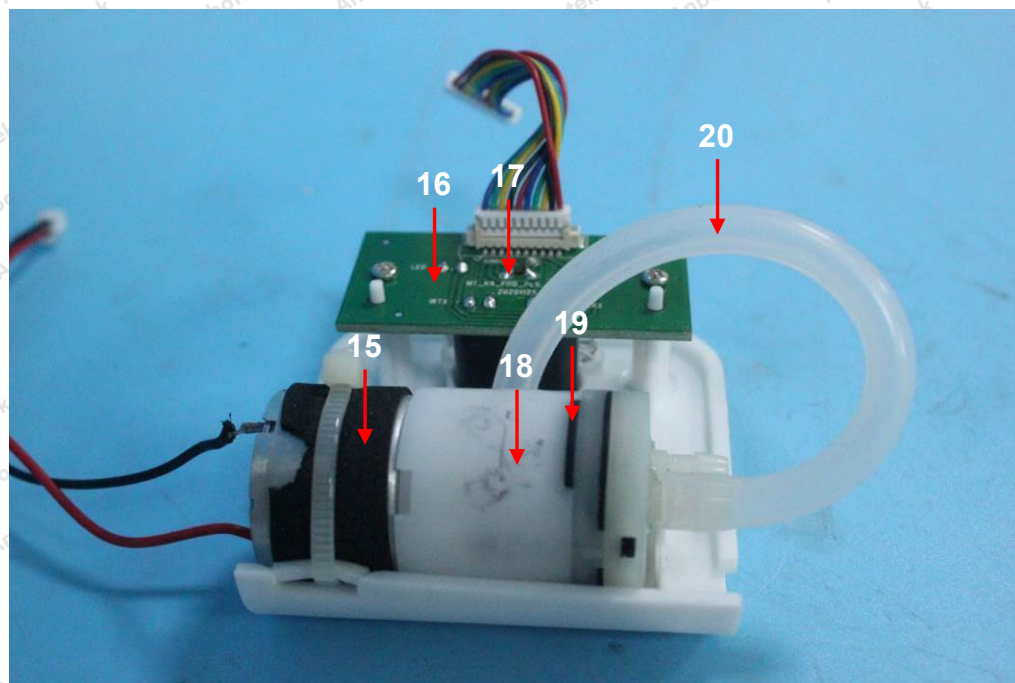
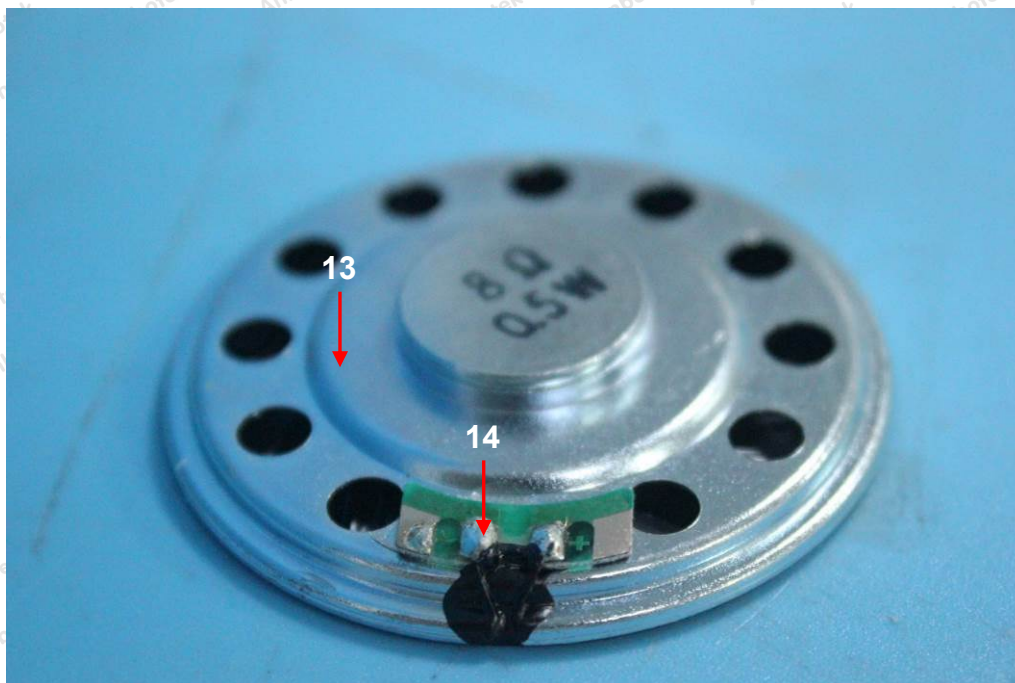


Test Report

Report No.: 18300RC10348001

Date: July 22, 2021

Page 28 of 33

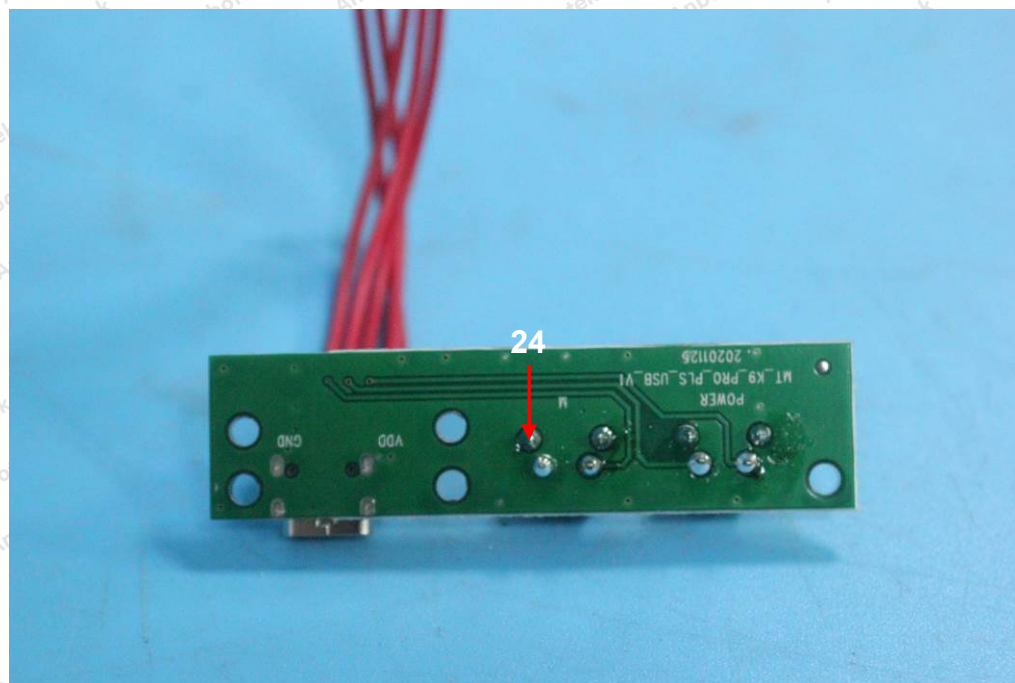
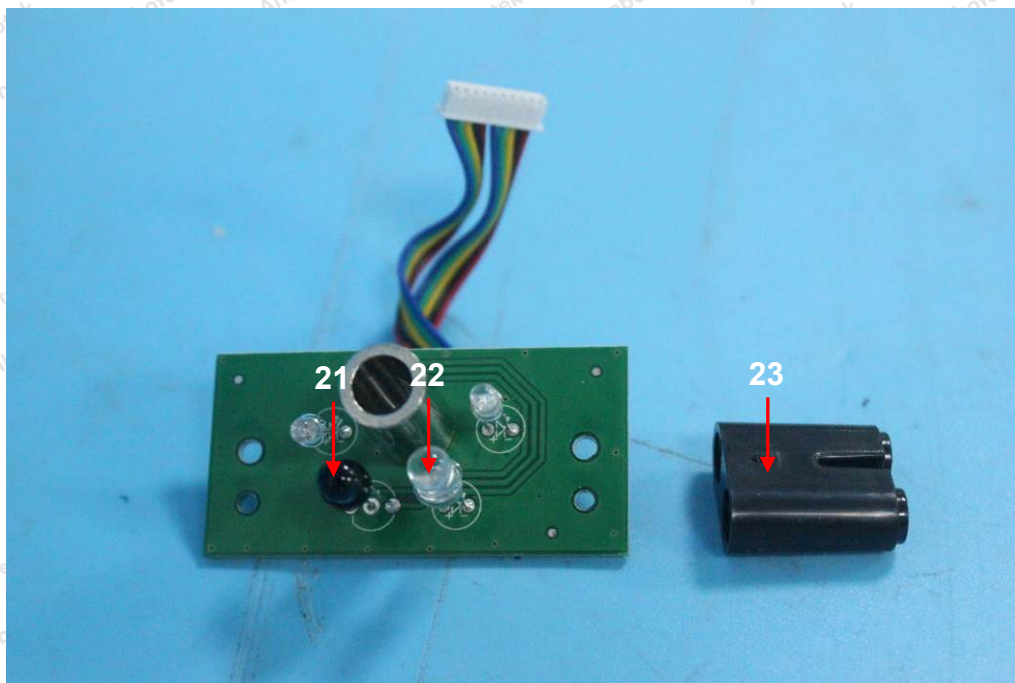


Test Report

Report No.: 18300RC10348001

Date: July 22, 2021

Page 29 of 33

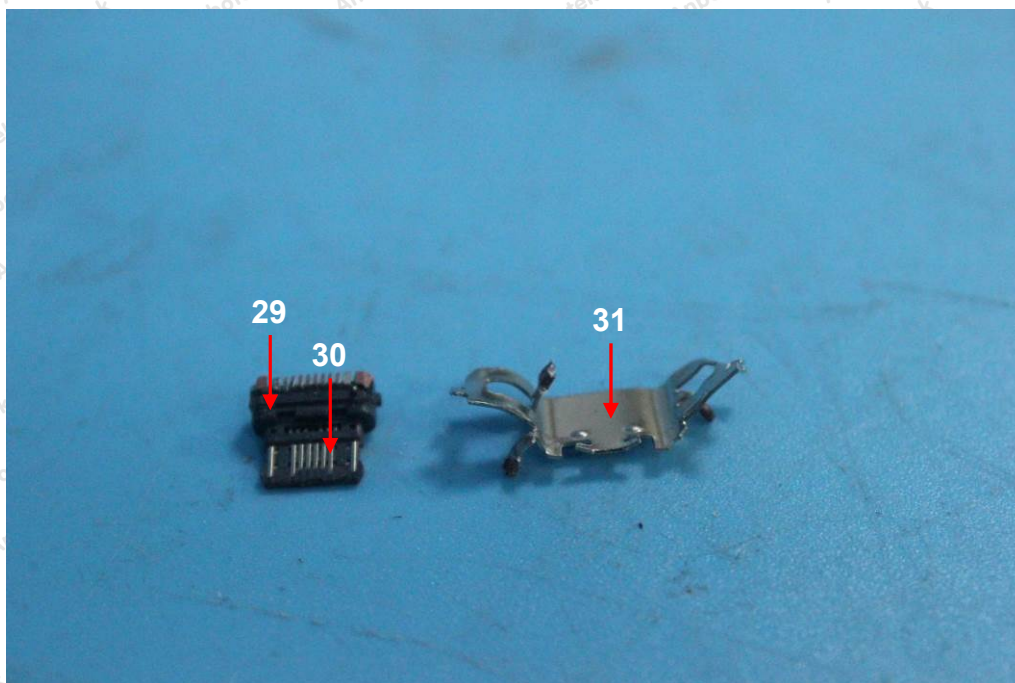
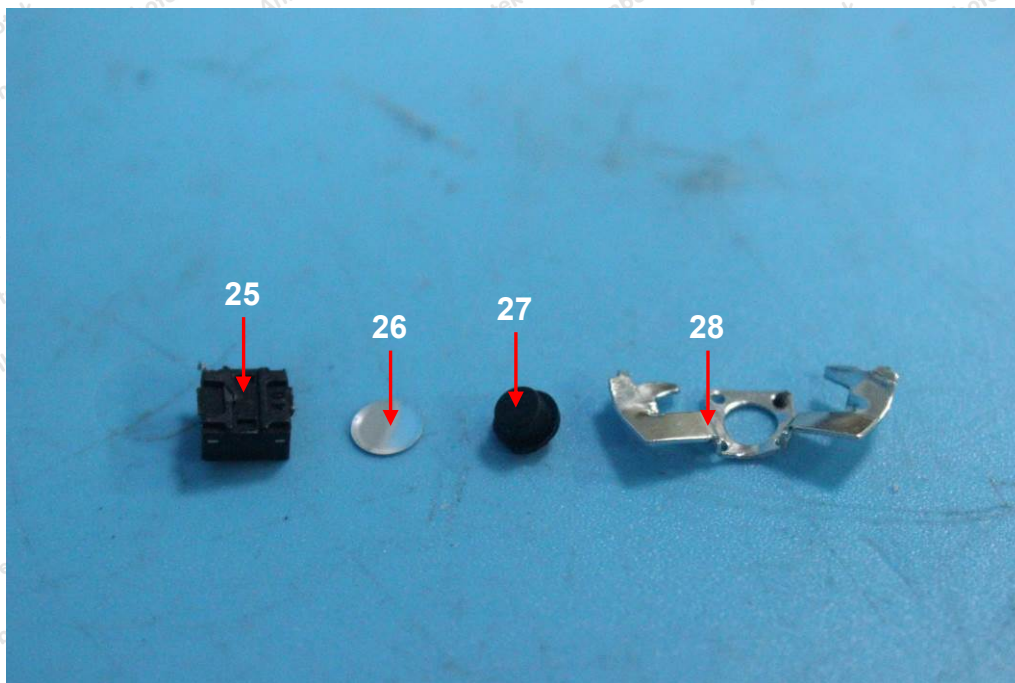


Test Report

Report No.: 18300RC10348001

Date: July 22, 2021

Page 30 of 33

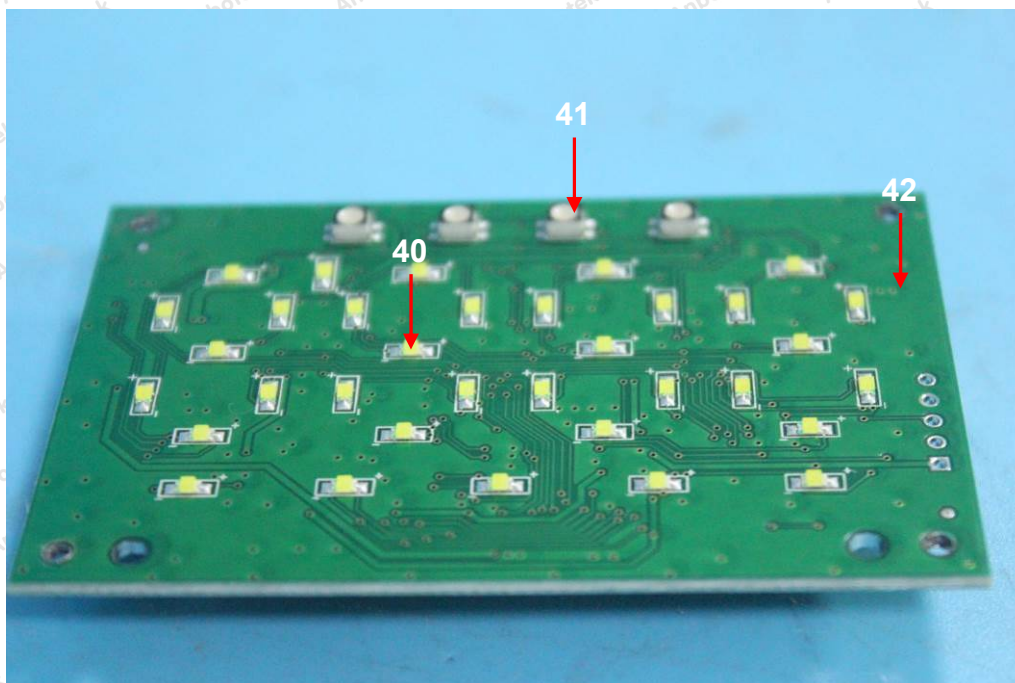
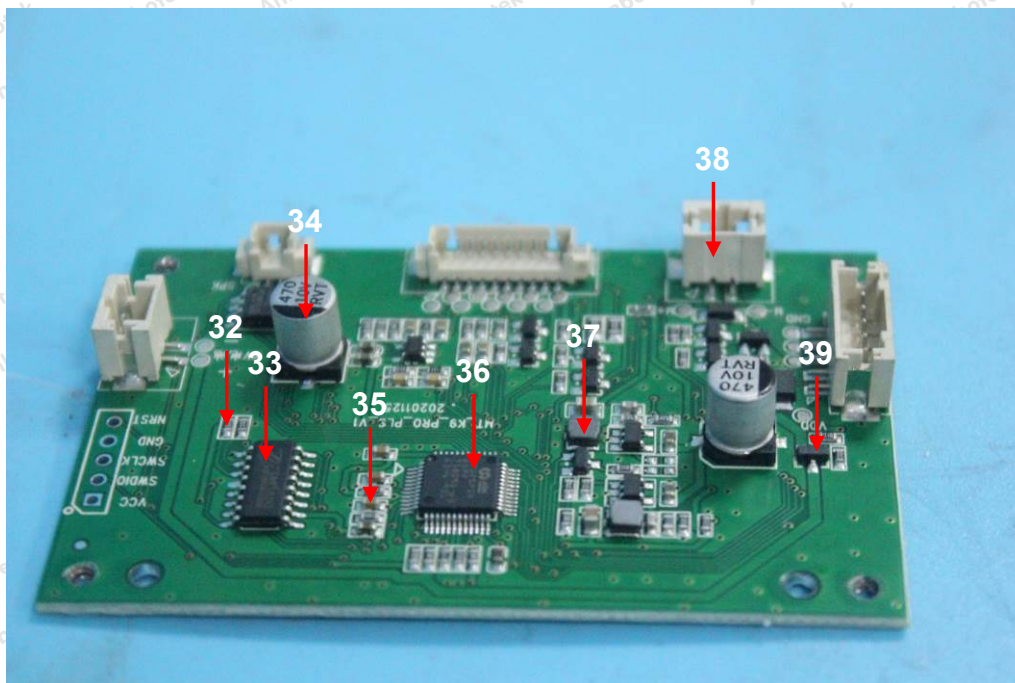


Test Report

Report No.: 18300RC10348001

Date: July 22, 2021

Page 31 of 33

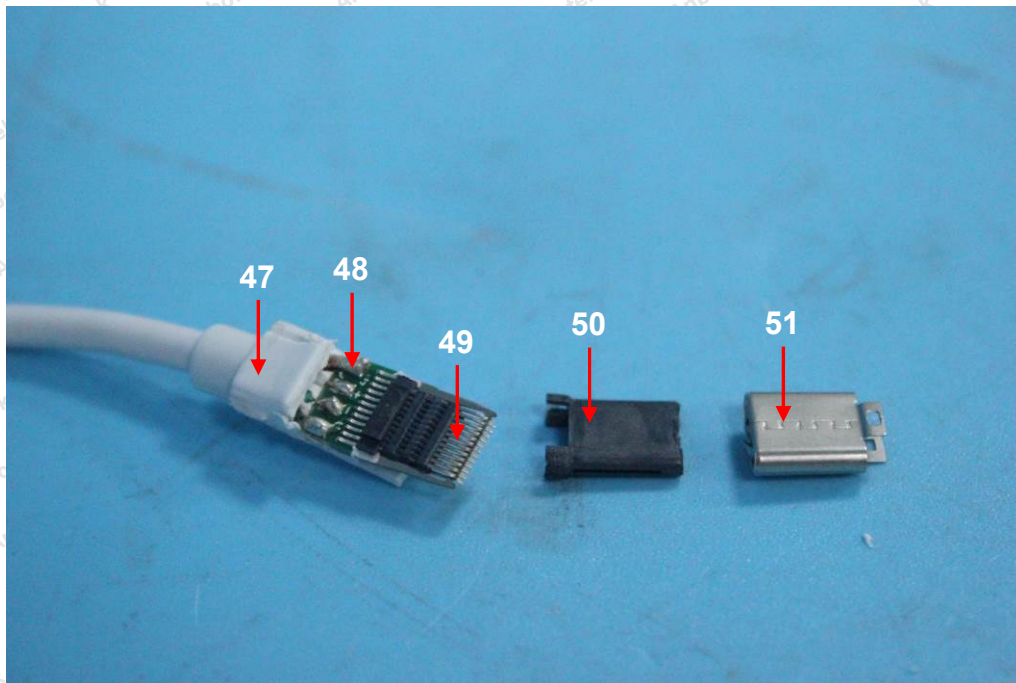
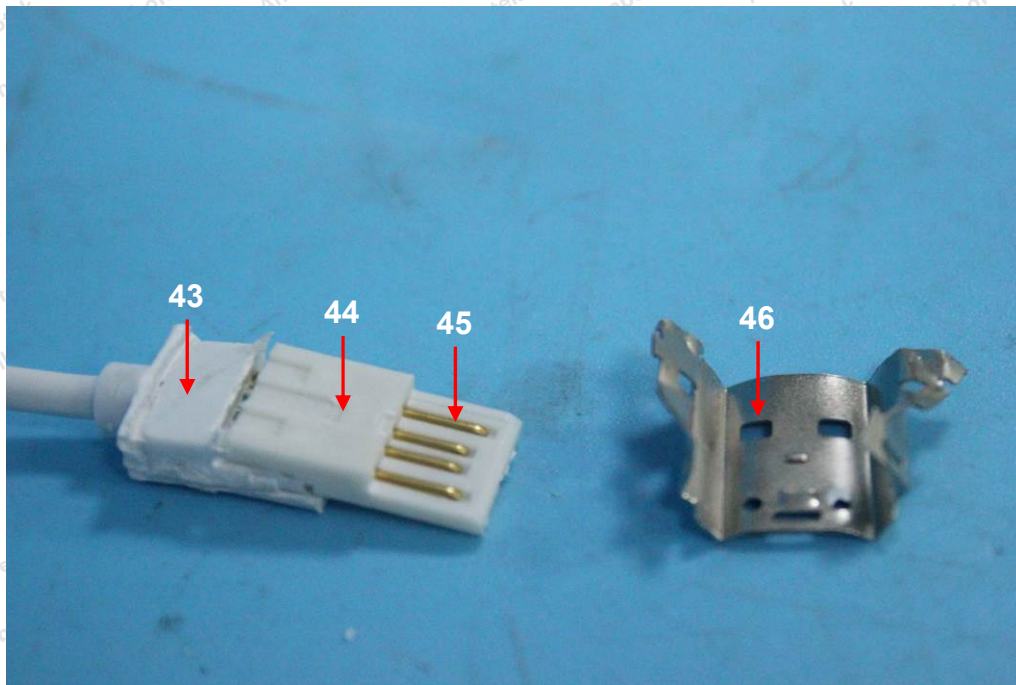


Test Report

Report No.: 18300RC10348001

Date: July 22, 2021

Page 32 of 33

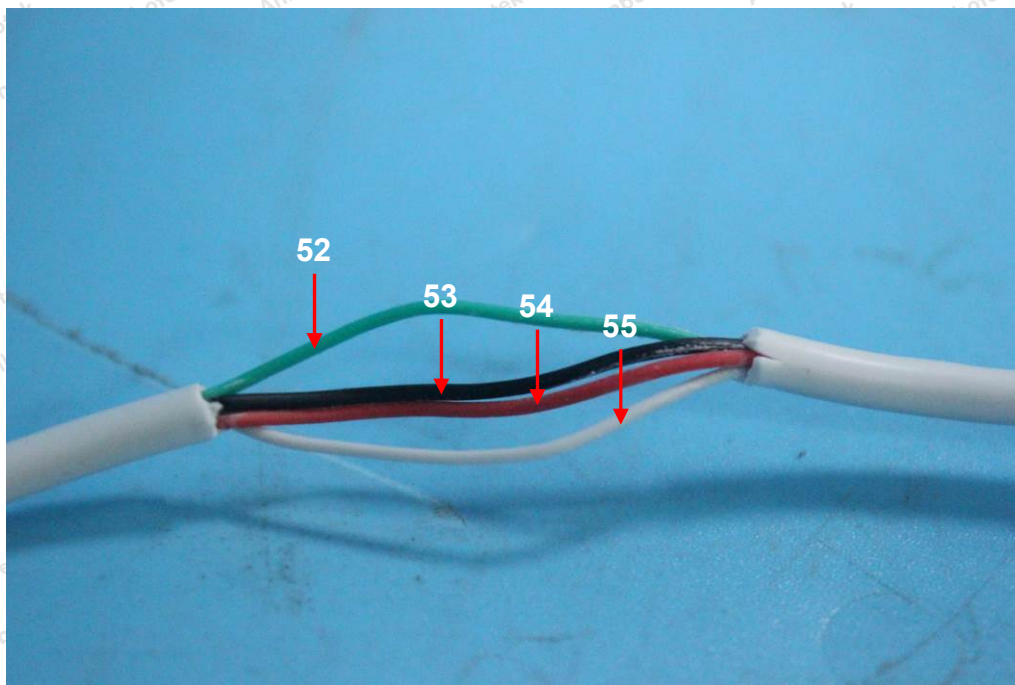


Test Report

Report No.: 18300RC10348001

Date: July 22, 2021

Page 33 of 33



***** End of Report *****

The test report is effective only with both signature and specialized stamp. The result(s) shown in this report refer only to the sample(s) tested. Without written approval of Anbotech, this report can't be reproduced except in full.